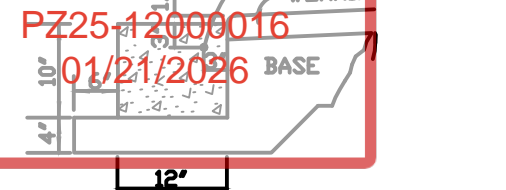


DRC

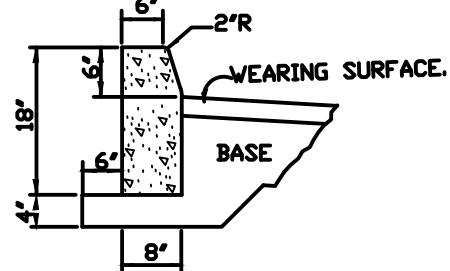
PZ25-12090016

01/21/2026

1. NO. 4 BAR PLACED ON PAVEMENT SIDE WEARING SURFACE.

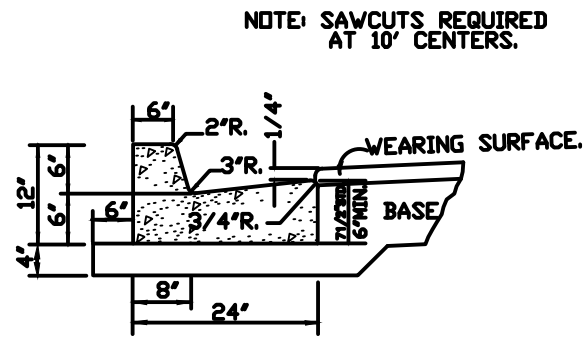


CONCRETE
HEADER CURB
NO SCALE.



F.D.T. TYPE "D"
CONCRETE CURB
NO SCALE.

VALLEY GUTTER
NO SCALE.

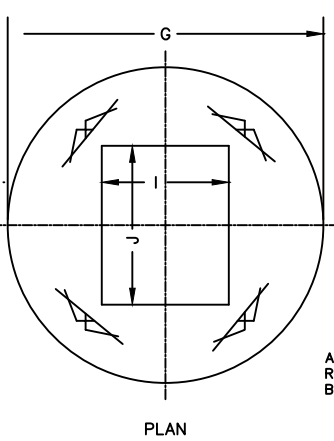


NOTE: SAVCUTS REQUIRED AT 10' CENTERS.

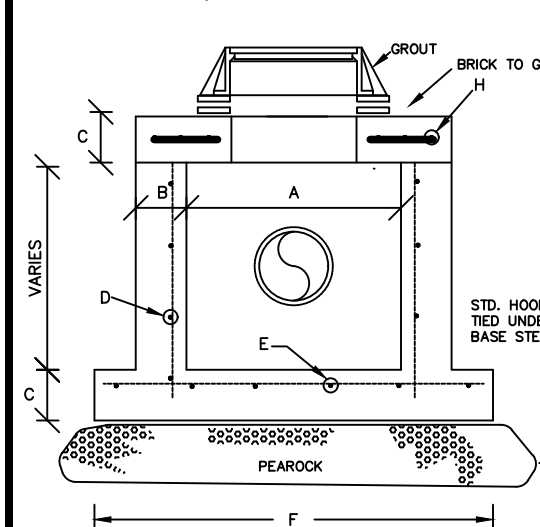
F.D.T. TYPE "F"
CONCRETE
CURB AND GUTTER.
NO SCALE.

- NOTES:
1. ROADWAY SUBGRADE SHALL IN ALL CASES EXTEND BELOW CURBING.
 2. SAVCUTS AT 10' CENTERS SHALL BE MADE WITHIN 24 HOURS OF CONCRETE PLACEMENT.

CURB AND GUTTER



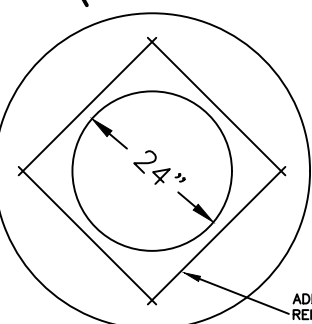
INLET/C.B.-TOP SLAB



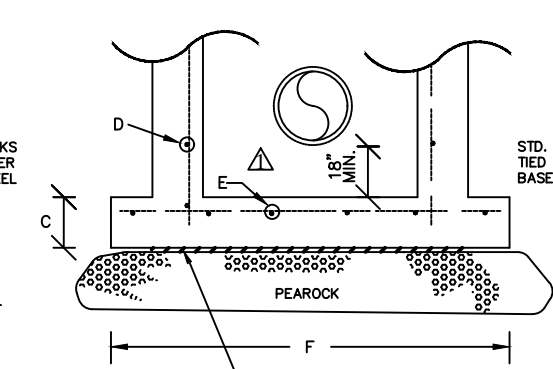
PRECAST INLET TYPE II-IV

- INLET OR CATCH BASIN (C.B.)
1. USF 4155-6210 (500/PAVEMENT)
 2. USF 5113-6194 TYPE "H" (VALLEY GUTTER) ("V"-G)
 3. USF 5113-6194 TYPE "H" AND LARGER (VALLEY GUTTER) ("V"-G)
 4. USF 5130-6168 (CURB INLET) ("C"-G)
- MANHOLE
1. USF 420 - A

GRATES\MANS

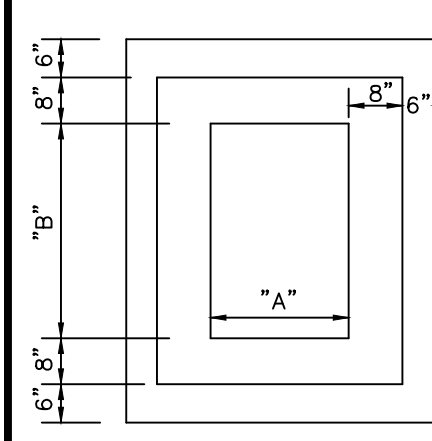


MANHOLE-TOP SLAB

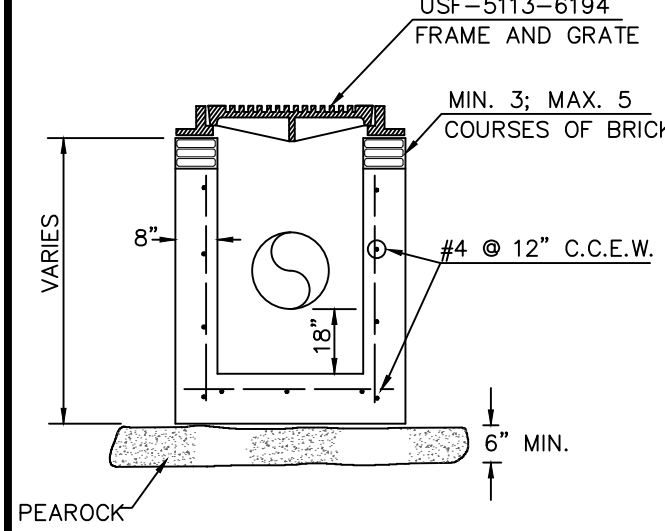


PRECAST CATCH BASIN TYPE II-IV

PIPE DIA.	TYPE	"A"	"B"	"C"	"D"	"E"	"F"	"G"	"H"	"I"	"J"
15"-24"	II	4'-0"	8"	8"	#4 @ 12" C.C.E.W.	#4 @ 12" C.C.E.W.	6'-4"	5'-4"	#4 @ 6" C.C.E.W.	22"	22"
30"-36"	III	5'-0"	8"	8"	#5 @ 12" C.C.E.W.	#5 @ 12" C.C.E.W.	7'-4"	6'-4"	#5 @ 8" C.C.E.W.	22"	46"
42"-48"	IV	6'-0"	8"	10"	#5 @ 12" C.C.E.W.	#5 @ 6" C.C.E.W.	8'-4"	7'-4"	#5 @ 8" C.C.E.W.	22"	46"
54"	V	8'-0"	10"	10"	2-W.W.M. W/4 12" C.C.E.W.	#5 @ 6" C.C.E.W.	10'-8"	9'-8"	#5 @ 6" C.C.E.W.	22"	46"



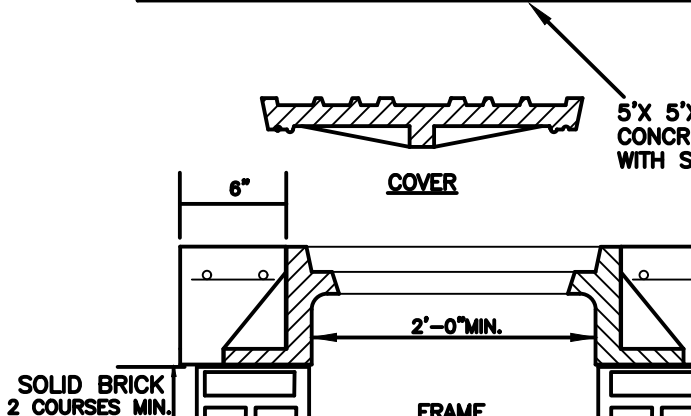
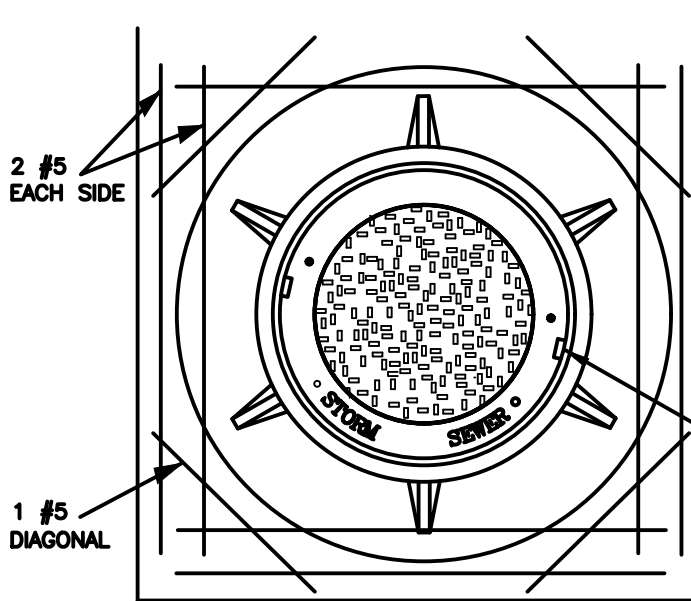
PLAN



SECTION

NOTE: PROVIDE 8" TOP SLAB & USF 5113-6194 VALLEY GUTTER FOR TYPE "E" VALLEY GRATE

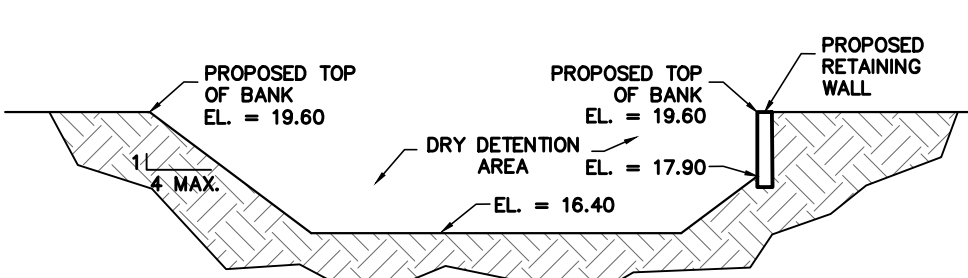
PRECAST CATCH BASIN TYPE "C"



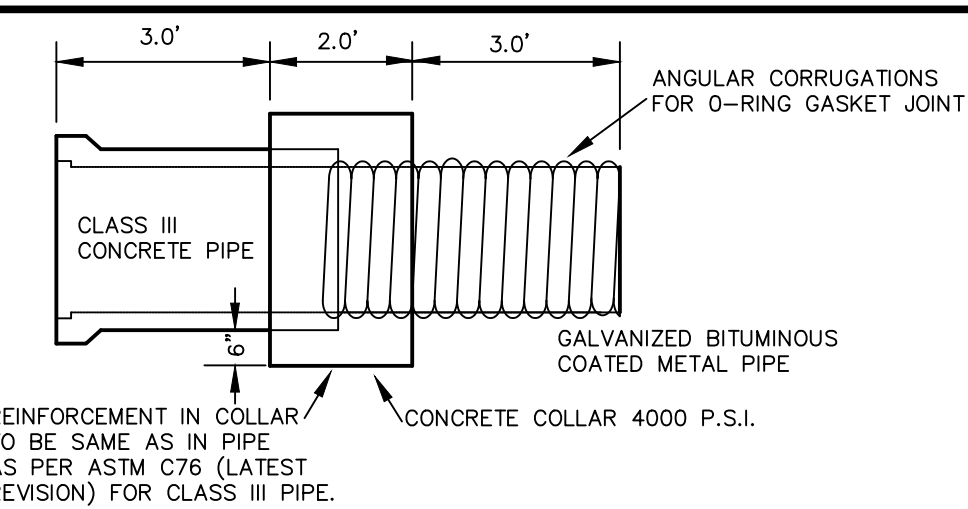
NOTES:

1. COLLAR IS REQUIRED ONLY WHEN MANHOLE IS OUT OF PAVEMENT.
2. FRAME AND COVER SHALL BE U.S. FOUNDRY 420 A (OR EQUAL).

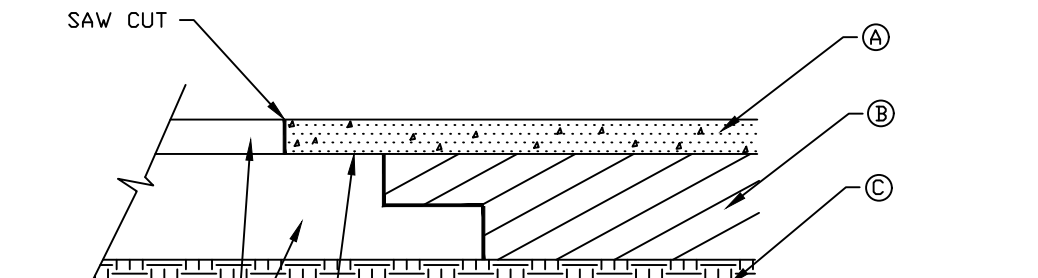
STORM SEWER MANHOLE FRAME AND COVER



TYPICAL DRY DETENTION AREA SECTION



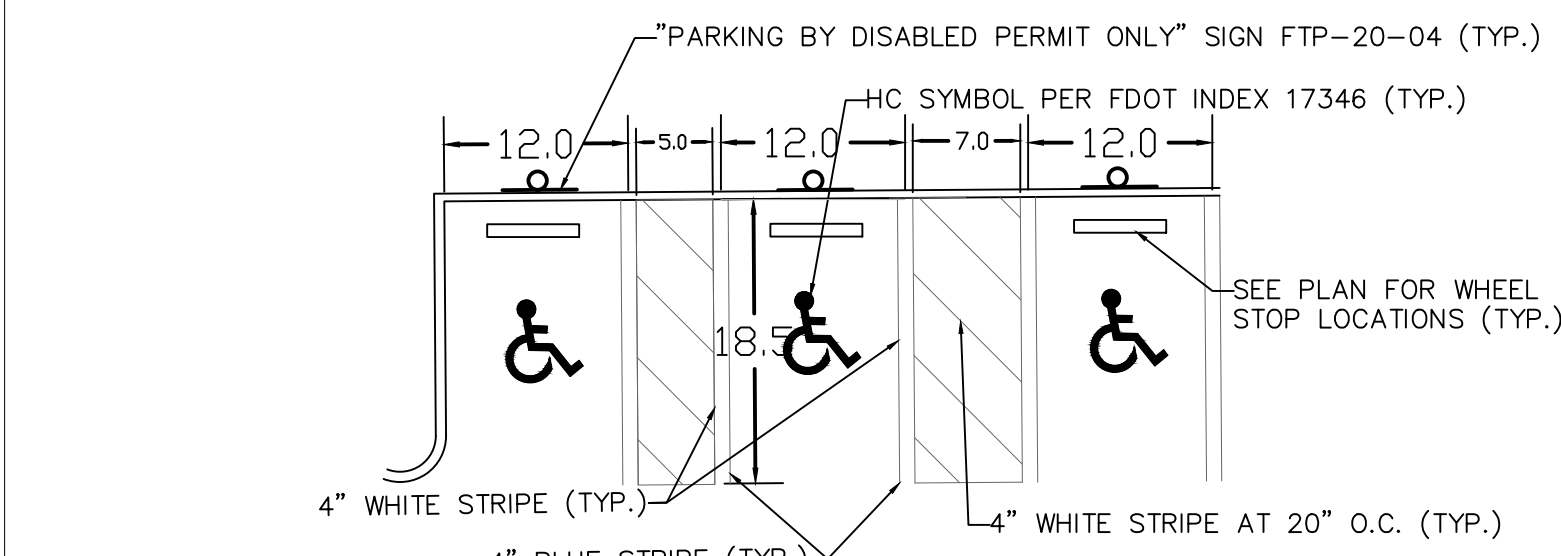
CONCRETE COLLAR



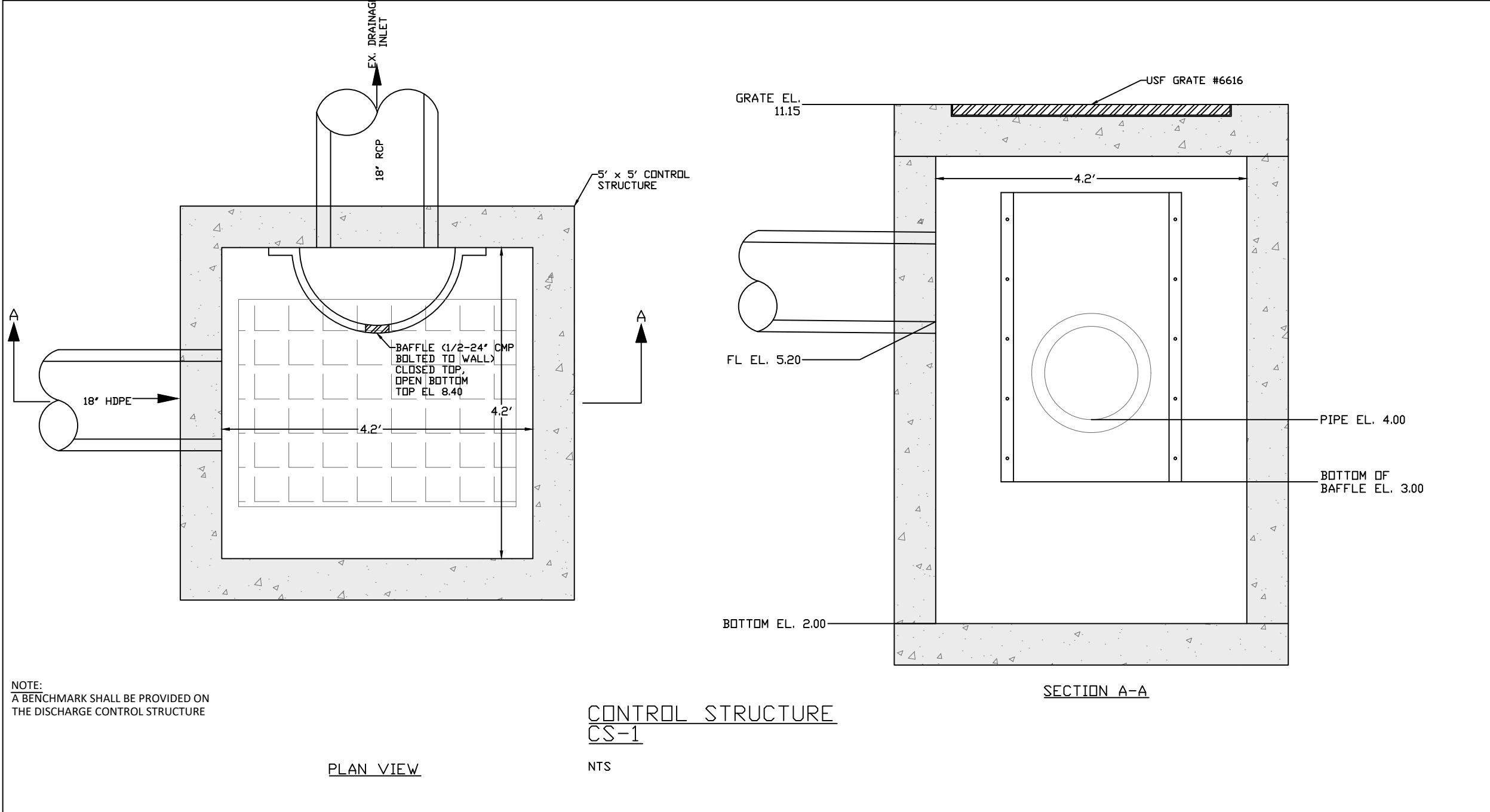
- SAW CUT
- EXISTING ASPHALT AND BASE
- EXISTING ASPHALT TO BE REMOVED
- THIS METHOD OF PAVEMENT JOINT SHALL BE USED FOR ANY APPLICATION OR CONSTRUCTION WHERE PROPOSED PAVEMENT AND BASE WILL BE CONNECTED TO EXISTING PAVEMENT AND BASE.
- PAVEMENT JOINT
- PAVEMENT SPECS
- ROAD PAVEMENT SPECIFICATIONS (OFFSITE)
- N.T.S.

NOTES:

- ELEVATIONS SHOWN ARE IN NAVD 88 DATUM
- ALL DRAINAGE SYSTEMS SHALL BE PUMPED COMPLETELY DRY AND LAMPED AS A REQUIREMENT OF THE FINAL DRAINAGE INSPECTIONS.

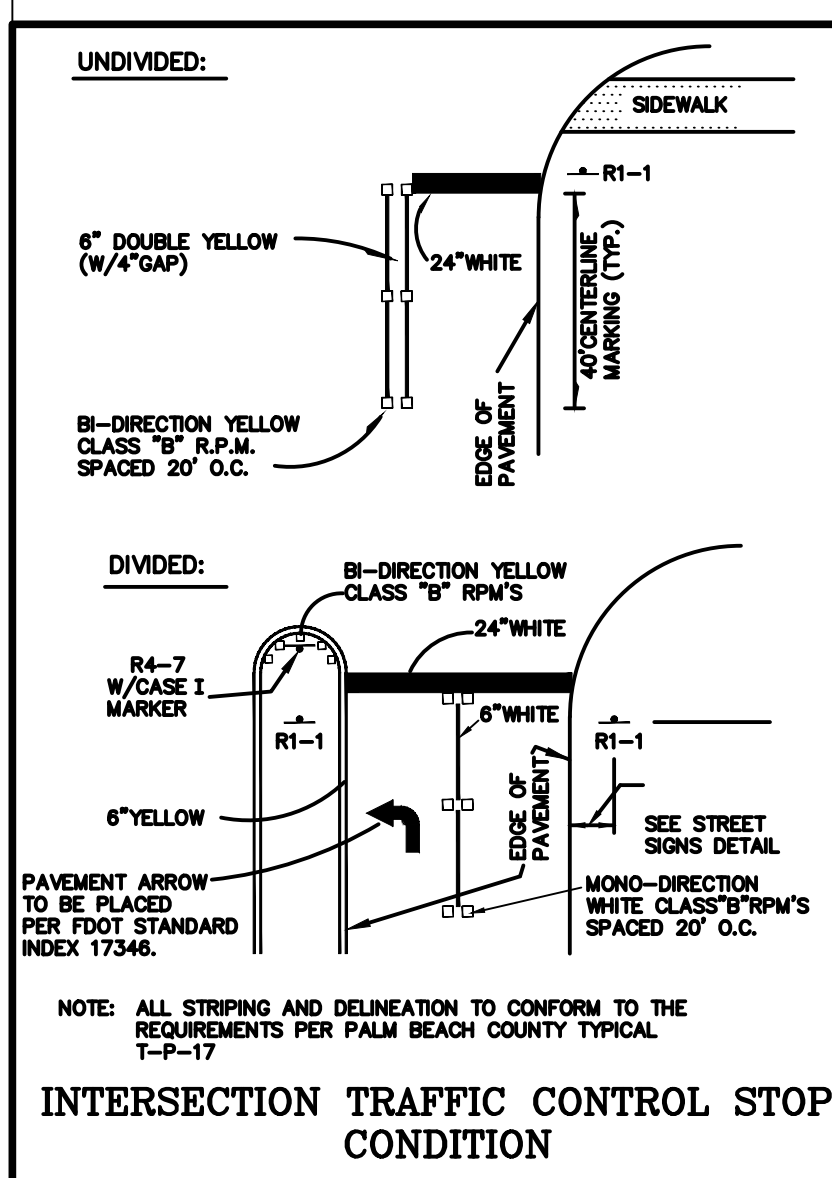


PARKING STALL DETAILS (N.T.S.)



CONTROL STRUCTURE CS-1

N.T.S.



INTERSECTION TRAFFIC CONTROL STOP CONDITION

Pavement marking and geometric shall be in accordance with the "Manual on Uniform Traffic Control Devices for Streets and Highways", and "Palm Beach County" typical No. T-P-18 (Or latest version).

PERMANENT MARKINGS

Installation:

- All markings shall be installed by the extruded method.
- Markings shall be free of weaves, bows, drips, drags, and other degrading items.
- Chalk shall be used for all layout markings

Materials:

- All materials shall be alkyl thermoplastic meeting all State specifications.

Thickness:

- All markings shall be installed to yield 90 mils of material measured above the pavement surface.

Beads:

- Reflective beads are to be installed per FDOT specifications on all markings.

Layout:

- Layout shall be made using marking chalk.
- It is recommended that marking layout be inspected by the City Engineer prior to the placement of final markings.

TEMPORARY MARKINGS

Temporary markings may be used only as specified in this section, or as approved or directed by the Palm Beach County Engineer.

Final Pavement Surface:

- Only foil backed marking tape is allowed.
- All tape shall be totally removed concurrent with permanent marking placement.

Other Pavement Surfaces:

- Intermediate pavement surfaces may be marked with FDOT approved materials, designs, and specifications.

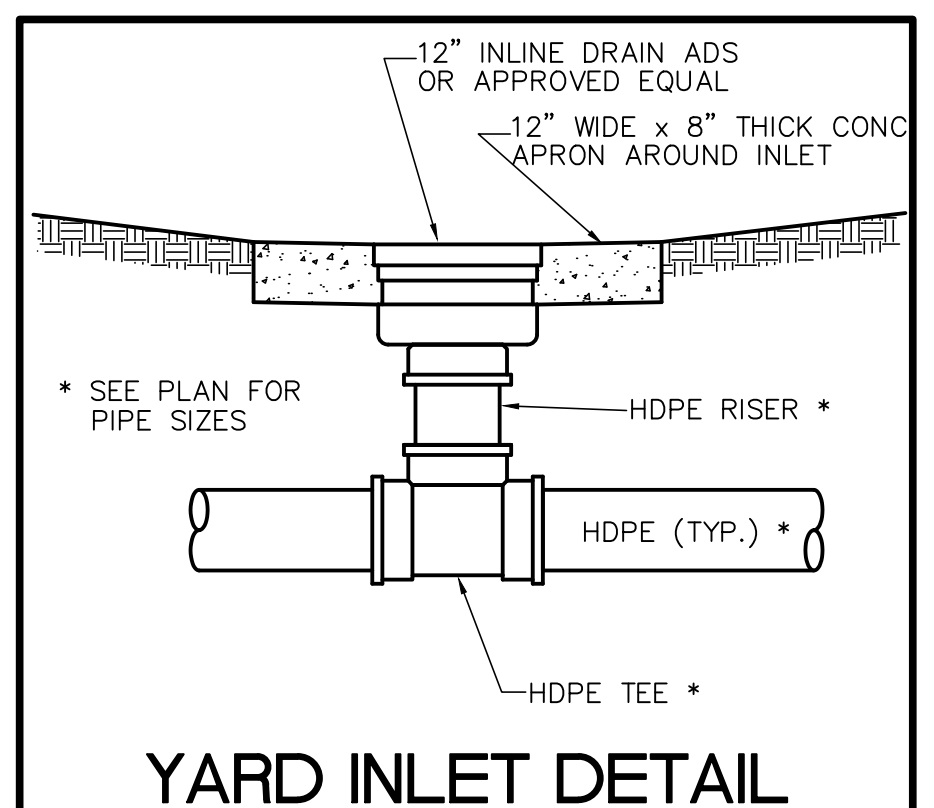
ALL PAVEMENT MARKINGS

All paved surfaces shall be properly marked prior to the hours of darkness.

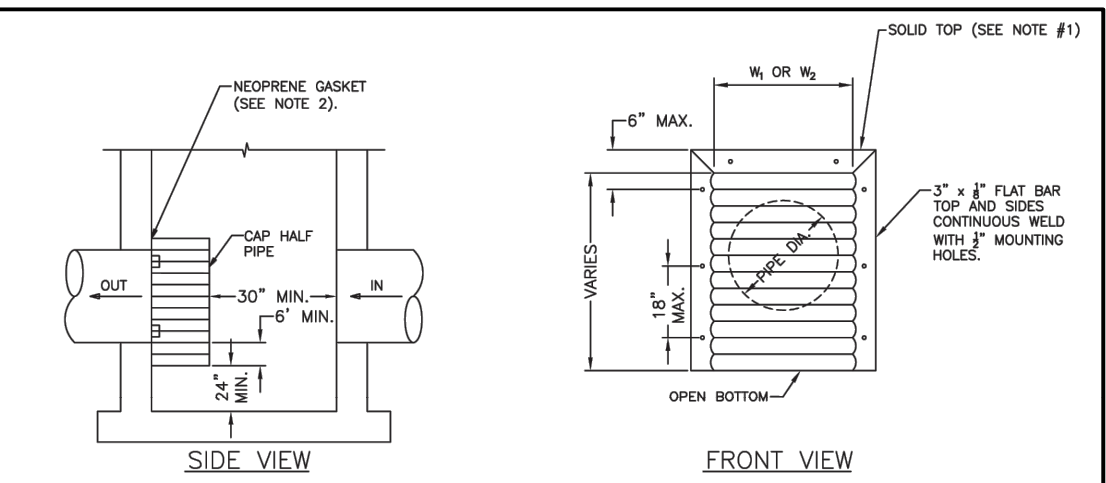
RAISED PAVEMENT MARKERS

- R.P.M.s shall be installed on all lane lines and centerlines, spaced at 20' or 40'.
- R.P.M.s shall be a 4 x 4 type class "B" marker meeting FDOT specifications and shall be approved by the Engineer prior to use.
- R.P.M.'s shall be installed using alkyl thermoplastic on asphalt and epoxy on concrete.

PAVEMENT MARKING SPECIFICATION



YARD INLET DETAIL



NOTES:

1. ALUMINUM SHEET OF SAME THICKNESS (GAUGE) AS PIPE SHALL BE WELDED TO CLOSE THE OPENING AT THE TOP.
2. NEOPRENE ADHESIVE BACKED GASKET, OR APPROVED EQUAL (1"x3") SHALL BE INSTALLED ON THE SIDES AND TOP OF ALL BAFFLES.
3. POLLUTION RETARDANT BAFFLE TO BE FASTENED IN PLACE WITH 3"x4" STAINLESS STEEL "RED HEADS" OR APPROVED EQUAL.
4. MOUNTING BRACKETS MAY BE ADDED TO FLAT BARS TO EASE INSTALLATION IN ROUND STRUCTURES. SPACING TO MATCH HOLES IN FLAT BARS.

* POLLUTANT RETARDANT BAFFLE DETAIL

REV	PER CITY COMMENTS	DATE	BY
12/16/25	DJP		
10/21/25	DJP		
08/25/25	DJP		

CAULFIELD & WHEELER, INC.
CIVIL ENGINEERING
LANDSCAPE ARCHITECTURE - SURVEYING
7900 GLADES ROAD - SUITE 100
BOCA RATON, FLORIDA 33434
PHONE (561)-392-1991 / FAX (561)-750-1452

THE SATORI
4211 N FEDERAL HIGHWAY
PAVING, GRADING, & DRAINAGE DETAILS
POMPANO BEACH, FL., 33064

DATE	05/28/25
DRAWN BY	DJP
F.B./ PG.	----
SCALE	N/A

MATTHEW V. KAHN
PROFESSIONAL ENGINEER
LICENSE NO. 82227
STATE OF FLORIDA
- FOR THE FIRM -
DATE

JOB # 11146
SHEET NO.
PD-6
OF 16 SHEETS